



Seeley Genealogical Society Newsletter

Established 1965

Issue No. 148-2011-02

History ★ Family ★ Research

May 2011

Schedule Set for 2011 SGS International Reunion

Story By Kathie Olsen, SGS President

Plans for the 2011 Seeley Genealogical Society International Reunion to be held July 14-17, 2011. The latest schedule of events is below. The reunion will be held at the Hilton Garden Inn Elmira/Corning 35 Arnot Road, Horseheads, N.Y.

Here is the overall schedule:

Thursday, July 14, 2011

9:00 a.m. Registration

10:00 a.m. Executive Board Meeting
Meeting for all elected and appointed officers. General membership may attend if desired.

1:00 p.m. Opening Session
The opening session will include announcements, an introduction of the reunion theme and a welcoming keynote address by Kerry Lippincott, Education Coordinator of the Chemung County Historical Society. The theme for her address is an "Overview of the History of the Area, Including Seeley Family Settlers"

2:45 p.m. Member Presentations
These will include discussions about Seeley Families who settled in or migrated through the area. Presenters will include:

- Jim Seeley discussing William Seeley, SGS#1692
- Dianne Seelye discussing Charles Seelye, SGS#2530
- Eugene Seelye discussing Ebenezer Seelye, SGS#299;
- Jesse Crisler discussing Justus [William] Seelye, SGS#282
- Kathie Olsen discussing Justus Azel Seelye, SGS#836.

Although the schedule is set, we'd love to include some time for you to tell us about your ancestor! The presentations will be about 15 minutes each. If you're interested in sharing, contact Kathie Olsen (See contact data on page 15).

7:00 p.m. Dinner with Speaker
We are pleased to announce that J. Kelsey Jones, a prominent researcher in the area, has agreed to be the after-dinner speaker.

Friday, July 15, 2011

8:30 a.m. Morning Tours
We'll leave from the hotel. Admission fees will be the

responsibility of the participant. We are hopeful that carpooling can be arranged to keep expenses as low as possible.

- The Corning Museum of Glass (Admission fee is about \$14.00; children under 19 are free)
 - Historical Tour of Elmira, New York including sites relating to Mark Twain, Woodlawn Cemetery, Chemung Historical Society and the Booth Library (Admission fee is about \$5.00 for trolley)
- 1:30 p.m. Afternoon Tours
We'll again leave from the hotel.
- Finger Lakes Winery Tour (Admission fee is about \$5.00)

Reunion Theme:

**Settling Down and Migrating Through:
The Seeley Family in the Twin Tier area of
Southern New York and
Northern Pennsylvania**

- Historical Tour of Chemung County, New York, including Tioga Point, Pennsylvania, Fitzsimmons Cemetery, Seeley Creek, and the Revolutionary War Newtown Battlefield. (Cost unknown at this time)

7:00 p.m. Dinner with Speaker
We are pleased to announce that Joyce Tice, another prominent researcher in the area, has agreed to be the after-dinner speaker.

Saturday, July 16, 2011

9:00 a.m. SGS Membership/Business Meeting
Election of officers, discussion of upcoming reunions, voting on society issues, discussion of concerns, etc.

11:00 a.m. Group Photo (at hotel)

12:00 p.m. Family Picnic at Big Flats Town Park.

Please See 2011 Reunion Page 2

Inside This Issue

President's Report	2
2011 SGS International Reunion Registration Form ..	3
SRC Librarian Update	4
Proposed Changes to the SGS Constitution	5
Historic Seeley Stables.....	7
Military Notes	10
SGS Queries.....	11
SGS Officers Contact Information	15
SGS Publications to Order	16



Member: Federation of Genealogical Societies and National Genealogical Society



The Seeley Genealogical Society Newsletter

is published quarterly by the
Seeley Genealogical Society

Editor

Paul Taylor

Address newsletter correspondence to:

SGS Newsletter
3848 Frazier Lane
Virginia Beach, VA 23456

Phone: 757-759-9551
email: paul.taylor.va@gmail.com

Announcements

The SGS Newsletter is published every February, May, August, and November. Announcements are published for free and are due to the editor by the 15th of the month preceding publication.

SGS Mission Statement

The Society shall engage in research, study, verification, discussion, collation, publication, dissemination, and preservation of Seeley information for the Society, for its members and for posterity.

Membership

Membership is open to anyone interested in genealogy, history or biography; amateur or professional. Although the name Seeley refers to one family surname, SGS counts among its family those with surnames spelled a variety of ways such as: Seeley, Seelye, Sealy, Sealey, Seley, Selye, Seale, Seelee, Seela, Cieley, Cealy, Cilley, etc.

Membership Dues

\$8 per year, \$15 two years, \$21 three years, or \$30 five years. Lifetime memberships are \$100. (Dues are in U.S. dollars and the membership year runs from Sept. 1 to Aug. 31)

Pay all dues to:

SGS Membership Chair
Lynda Simmons
125 Parkview Drive
Park City, UT 84098
(435) 649-9878
summitkids@gmail.com

Seelye National Research Center

is co-located with the Seelye Mansion in Abilene, Kan. For more information, contact: Seelye Research Center, Director Terry Tietjens
P.O. Box 337, 1105 N. Buckeye
Abilene, KS 67410-0337
Phone: (785) 263-1084
email: terryt@access-one.com

SGS International Reunions

are held every two years. The next one is scheduled for July 14-17, 2011 in the tri-counties area of New York and Pennsylvania (Bradford County, and Tioga County, Pennsylvania and Chemung County of New York). Please advise the editor if your branch or family has plans for a sectional or local reunion in the interim. Others might like to know about it.

Editorial Position

The editorial opinions expressed in this newsletter are the opinions of the writers and do not necessarily reflect the opinions of the Society or the editors, nor are the Society or its editors responsible for errors of fact or opinion. Proved errors will be corrected.

President's Report

I am so excited for the Seeley Genealogical Society Reunion to be held in the Twin Tier Area of Southern New York and Northern Pennsylvania, July 14th to July 17th, 2011 in Horseheads, New York. The opening session will be on Thursday, July 14, 2011 at 1:00 pm. There will be an Executive Board Meeting that morning. Activities will include meetings of the Society; dinner gatherings with great speakers; member presentations, tours of area sites, a family picnic and plenty of opportunity to visit with one another and find out again what a great family we belong to! The reunion will conclude with a late breakfast on Sunday, July 17, 2011. See the summary of events for a more detailed listing.

I love to come to family reunions! I love to renew old friendships and make new ones! I always learn something that I didn't know before. It is exciting to go to different locations and find out about our relatives who lived in the area. I hope you are planning to come! I know you will enjoy yourself!

This is a very beautiful area where many Seeley families settled. Some stayed in the area and others moved on to various other locations. It is our hope that we will know more about these people and many more people who called this area home at the conclusion of our 2011 reunion.

Plan now to join us for the reunion. You can come early and stay late, there are lots of things to see and do! Mark your calendar now! Early registration will be appreciated! See the registration form in this newsletter. Encourage all your Seeley (no matter how you spell it) relatives to be there. It is always fun to be together!

I would like to thank everyone who is involved with the Seeley Genealogical Society in any way. Each member is very important. Thanks to all of our elected and appointed officers! They are all volunteers who give of their time and energy freely and I thank them all! Thanks to all those who spend many hours to help the Society reach its goal to "engage in research, study, verification, discussion, collation, publication, dissemination and preservation of Society information for the Society, for its members and for posterity." SGS Constitution, Article II, Section 2.

Kathie Olsen (Katherine M. Olsen)
President, Seeley Genealogical Society

2011 Reunion Schedule Set *(continued from page 1)*

A nice lunch is planned with sandwiches and trimmings at \$10.00 per person. We hope many of those who descend from Seeley families in the area will join us. If this is the only event you will be attending, the Registration Fee will be waived.

4:00 p.m. New officers meeting at the hotel.

7:00 p.m. Buffet Dinner and Officer Installation at ElMonte's Restaurant in Horseheads, New York

Sunday, July 17, 2011

11:00 a.m. A late breakfast at the hotel. A late check-out from the hotel has been arranged for those leaving the hotel after breakfast.

We have contracted with the Hilton Garden Inn Elmira/Corning, Horseheads, New York to host the reunion. All events unless noted are at the Hilton Garden Inn. Reservations at the group rate of \$99.00 plus tax per night must be made for rooms at this hotel by Monday, June 13, 2011. The telephone number to call is 607-795-1111. Mention the Seeley Genealogical Society.

Please register early using the Registration Form in this newsletter. Please make sure that completed Registration Forms and checks are received by Kathie Olsen before Thursday, June 30, 2011.



Registration Form	
SGS 2011 International Reunion, Horseheads, N.Y., July 14-17, 2011	
<i>ATTENDEE NAME (FIRST, MIDDLE INITIAL, LAST):</i>	<i>ADDRESS:</i>
<i>SEELEY LINE (NATHANIEL, OBADIAH, OTHER):</i>	
SGS MEMBER? <input type="checkbox"/> MEMBER <input type="checkbox"/> LIFE MEMBER <input type="checkbox"/> NOT A MEMBER	<i>E-MAIL ADDRESS:</i>
<i>ADDITIONAL ATTENDEE NAME (FIRST, MIDDLE INITIAL, LAST):</i>	<i>RELATIONSHIP (SPOUSE, SON, FRIEND, ETC.):</i>
SGS MEMBER? <input type="checkbox"/> MEMBER <input type="checkbox"/> LIFE MEMBER <input type="checkbox"/> NOT A MEMBER	<i>E-MAIL ADDRESS:</i>
<i>ADDITIONAL ATTENDEE NAME (FIRST, MIDDLE INITIAL, LAST):</i>	<i>RELATIONSHIP (SPOUSE, SON, FRIEND, ETC.):</i>
SGS MEMBER? <input type="checkbox"/> MEMBER <input type="checkbox"/> LIFE MEMBER <input type="checkbox"/> NOT A MEMBER	<i>E-MAIL ADDRESS:</i>
<i>ADDITIONAL ATTENDEE NAME (FIRST, MIDDLE INITIAL, LAST):</i>	<i>RELATIONSHIP (SPOUSE, SON, FRIEND, ETC.):</i>
SGS MEMBER? <input type="checkbox"/> MEMBER <input type="checkbox"/> LIFE MEMBER <input type="checkbox"/> NOT A MEMBER	<i>E-MAIL ADDRESS:</i>

LODGING

Call the Hilton Garden Inn Elmira/Corning at 607-795-1111 for room reservations no later than Monday, June 13, 2011 to get the group rate of \$99.00 per night plus tax. Mention Seeley Genealogical Society. Specify handicapped accommodations, if needed. Specify a king bed or two double beds and smoking or non-smoking room.

REUNION EXPENSES

Registration Fee (REG. FOLDER, SPEAKER, MEETING ROOM EXPENSES)	# of guests:	@ \$10.00 ea.	Subtotal:
Thursday Dinner (Lemon Pepper Chicken)	# attending:	@ \$27.00 ea.	Subtotal:
Thursday Dinner (Vegetarian Pasta Primavera w/Pesto Sauce)	# attending:	@ \$27.00 ea.	Subtotal:
Thursday Dinner (Roast Pork Loin)	# attending:	@ \$27.00 ea.	Subtotal:
Friday Dinner (London Broil Teriyaki)	# attending:	@ \$27.00 ea.	Subtotal:
Friday Dinner (Vegetarian Grilled Napoleon w/Marinara Sauce)	# attending:	@ \$27.00 ea.	Subtotal:
Friday Dinner (Baked Icelandic Haddock)	# attending:	@ \$27.00 ea.	Subtotal:
Saturday Picnic at Big Flats Town Park Pavilion	# attending:	@ \$10.00 ea.	Subtotal:
Saturday Buffet Dinner at El Monte's Restaurant	# attending:	@ \$25.00 ea.	Subtotal:
Sunday Late Breakfast Buffet	# attending:	@ \$15.00 ea.	Subtotal:
TOTAL:			

All meals are at the Hilton Garden Inn unless otherwise indicated. If you are only attending one event, the Registration Fee is waived.



Send check (payable to SGS) along with this registration form to:
 Katherine M. Olsen, President
 Seeley Genealogical Society
 777 East South Temple, Apt. 13H
 Salt Lake City, UT 84102-1214

For more information, contact Kathie
 at (801) 355-0301 or katherinemolsen@gmail.com

Please register early to give Kathie time to prepare name tags, meal tickets and registration packets.

Please ensure checks and completed registration forms are received by Kathie Olsen before Thursday, June 30, 2011.

SGS must confirm the number of meals no later than Friday, July 1, 2011.

The SGS Reunion: More Than You Might Expect

When Pam Turner went to her first SGS Reunion she thought of it as a chore.

"I was not a member," she said. "I was just a driver for my mom and aunt who had been members for many years. Remembering my reunions of my youth, (very boring) I figured I would sit in on a few presentations and then skip out and check out the local sites."

But when she got to Abilene, Turner was surprised by what happened.

"I discovered that this was nothing like my childhood reunions. People at these reunions are welcoming and fun and they are interested in you as a person and they want you to enjoy yourself," said Turner.

She has attended every reunion since 2005 and now serves in the volunteer position of Seelye Research Center Librarian.

"When you go to a reunion you are treated like family, and guess what -- you are! This is the one place where everyone is after the same thing you are; someone named Seeley. If you come with just a smidge of information, chances are someone else there has done the research that just might give you some of your answers.

SGS Membership Chair Lynda Simmons agrees.

"I love to go and enjoy our relatives from all over the United States and Canada," said Simmons. "We learn many interesting things about the Seeley family and the areas in which family members lived. I am fascinated by this information, but I especially like having fun with our relatives. Everyone is so happy to see each other!"

An Update from the Seelye Research Center Library

Story By Pam Turner, Seelye Research Center Librarian

Due to scheduling conflicts of many of the filing team members, it has been decided that we will not have a filing session in Abilene this year. So I thought I would pass along some of the things I have learned this past quarter. Hopefully, some of this information will be able to help with your searches.

First a little background; about this time last year, I bought a copy of "Family Tree Magazine". In there was a test to check your genealogical fitness; I of course failed miserably. The short answer for the article was to take some courses and they provided information on where to find some courses. I thought gee, I should do this, filed the article away and forgot about it. I've since come across it and have been taking courses on-line for free – how great is that!

I decided to start with the courses provided at www.FamilySearch.org. These seemed to me to be directed at someone just like me, a rank amateur; though they do provide courses for professional genealogists. Here are just some of the many things I've learned. I'm sure most of you know of a great tool called research logs. I discovered that these are a great way to organize and keep track of your research in the course called "Research Logs, parts 1 & 2" by G. David Dilts. If you don't know about research logs, please take these courses, it may



Pamela Turner (center) got more than she bargained for when she attended the 2005 SGS Reunion in Abilene, Ks. with her mother Caroline Haddon (left) and her aunt Laura Condie (right). She had such a good time, she's been to every reunion since, and now volunteers as the Seelye Research Center librarian.

As someone interested in genealogy and research in general, Turner said attending an SGS reunion "opens a whole new door of possibilities for you. It gives you direct access to new contacts for information and more importantly it allows you to meet new friends and possibly relatives. Come whether you are a member or not! If you're interested in the name of Seeley -- any spelling -- this is the place to be!"



change how you go about your research. Did you also know that males 16-18 in the 1820 Federal Census are also listed in the males 10-20 column? This information came from Angela McComas in the "Head of Household Only: Analysis" class. I also spent a most enjoyable hour with Mary Penner describing her research in "The Bachelor: Reconstructing a Solitary Life". Even though this was a presentation to professional genealogists it gave me some ideas on how to solve my family's brick wall. I'm still working my way through the class list but have learned at least one new thing in each of them. I hope you will check out some courses on your own, they may be just the thing to lead you in a new direction in your research.

Review Committee Proposes Changes to Constitution, By-Laws and Dues

Story By George Seeley, Constitution Review Committee Chair

EDITOR'S NOTE: The SGS Constitution and By-Laws (approved Sept. 17, 2005) require that proposed changes to those documents be published in the SGS Newsletter at least three months prior to the next reunion in which a general membership meeting is convened. The printing of this article in the February 2011 Newsletter satisfied that requirement. The proposed changes below will be voted on at the Membership Meeting at the 2011 SGS Reunion in Horseheads, N.Y at 9:00 a.m. on July 16, 2011. Assuming a quorum is present, a three-fifths majority vote will be required to make the changes.

At the August, 2009 Executive Board meeting in Salt Lake City, Utah, several issues were raised regarding the wording of the current Constitution and By-Laws and the fiscal viability of the Seeley Genealogical Society. As a result of that discussion, SGS President Kathie Olsen appointed a review committee consisting of Ramon Hall, Mary Palley, Jim Seeley, Linda Crocker and George Seeley, Committee Chair.

After much discussion throughout the following winter, the committee presented its proposal at the April 29, 2010 Executive Board meeting in Abilene, Kan. Following discussion by the board members present, the proposed changes were approved. As required by the Constitution, the following changes are being published for review prior to the next reunion in July, 2011. The proposed changes to the Constitution and By-Laws, as well as the suggested dues increase, require a three-fifths majority vote of the membership attending the business meeting of the reunion in Elmira in July, 2011.

Only sections to be changed are being published. Current wording is underlined; proposed changes are in bold text.

Constitution

Current Article III: Membership and Dues

Proposed Article III: **Membership, Dues and Fiscal Year**

Current Section 2: Dues shall be specified in the By-Laws.

Proposed Change: **Dues shall be specified in the SGS Newsletter subject to revision per Article I of the By-Laws.**

Proposed **new** Section:

Section 3: Fiscal Year

Any and all references within the Constitution and By-Laws referring to the fiscal year shall refer to the period October 1 through September 30.

Current Article IV (Officers) Section 3: The officers' and directors' term of service shall begin on the first day of the month following the election or reelection of officers at the national reunion.

Proposed Article IV (Officers) Section 3: **The officers' and directors' terms of office shall begin on October 1 following the election or reelection of officers and directors at the national reunion.**

By-Laws

Current Article I (Dues and Membership) Section 1: Dues shall be established by the membership. Any change in the dues structure must be approved by a three-fifths vote of the members at a regular reunion subject to a quorum requirement. The fiscal period is to coincide with the terms of the officers. Dues are to be paid to the Membership Chairman, who will issue a membership card and forward the dues to the Treasurer.

Proposed Article I (Dues and Membership) Section 1: **It shall be the responsibility of the Executive Board to periodically review the dues structure to ensure the fiscal integrity of the society. Changes proposed by the Executive Board must be approved by a three-fifths majority vote of the membership at the national reunion, subject to quorum requirements. Dues are to be paid to the Membership Chair, who will issue a membership card and forward dues plus appropriate documentation to the Treasurer. The fiscal period for dues shall coincide with the Society's fiscal year.**

Current Article VI: Amendments

Section 1: The Constitution or By-Laws of the Society may be amended by a three-fifths majority of members, provided that a quorum is present at an authorized reunion. Any amendment proposal must be printed and submitted to the membership in the newsletter at least three months prior to the reunion.

Proposed Article VI: **Amendments and/or Revisions**

Section 1: Amendments and/or revisions to the Constitution and the By-Laws will require approval by a three-fifths majority vote of the members at a national reunion subject to the quorum requirement. All proposed changes must be printed in the newsletter for membership review a minimum of three months prior to the reunion.

Fiscal Review

Following a review of the fiscal stability of the Society, the committee has determined that a dues increase is needed in order to keep the Society fiscally solvent. Postage and printing costs have risen dramatically to the point where they consume approximately 98% of our annual income. This, coupled with a drastic decrease in interest on savings and a decrease in membership, necessitates an increase in dues.

The Executive Board unanimously approved the increase which follows. Again, this information is being published in accordance with the guidelines prior to the vote at the next reunion.

	Current Dues	Proposed Dues
One Year	\$8	\$10
Two Years	\$15	\$18
Three Years	\$21	\$25
Five Years	\$30	\$36
LIFE	\$100	\$125

Benefits of Membership in the Seeley Genealogical Society

Story By Jim Seeley, SGS Past President



This worldwide, totally volunteer, organization is working to preserve and make available for genealogical research the family records of Seeley ancestors going back to Captain Robert Seeley who immigrated to America from England in 1630, and Obadiah Seeley who appeared in the records of Stamford, Conn. in the 1640s.

SGS also welcomes members of other Seeley lines (of all spellings). We encourage and assist in the study of family histories of Seeley lines of all spellings and pronunciations and are building a central repository of Seeley family records. We currently have about 400 members. Benefits of membership are:

1. Newsletter – We publish a quarterly SGS Newsletter that contains news, obituaries, queries, pictures, and more. A Newsletter is mailed to each member each quarter.
2. Reunions - Reunions are held every two years at varying locations throughout the United States and Canada. The next Reunion will be held at the Hilton Garden Inn Elmira/Corning, 35 Arnot Road, Horseheads, NY.
3. Research - SGS hires professional genealogists to do specific research that helps clarify relationships of our ancestors. DNA research is also a tool that has been utilized to refine specific relationships.
4. Seeley Ancestor File - A computer database has been developed to store Seeley Family relationships.
5. SGS Publications – Three publications listing the first five, the sixth, and the seventh generation descendants of Robert Seeley and Obadiah Seeley are available, as are selective records for succeeding generations provided by members of the Society. These records are also available on CD (see 9 below).
6. Seelye Research Center – A Seelye Research Center is co-located with the Dr. A.B. Seelye Mansion in Abilene, KS. This is where the SGS keeps many of its documents and archives.
7. Seelye Website - A website for the Society is maintained at <http://www.seeley-society.net>. This site has much of the data from items 4 and 5 above as well as a historical file of Society Newsletters.
8. Queries – Queries from both members and non-members relating to the greater Seeley family are researched by a Query Team under the guidance of our Query Editor. Queries and research results are published in the quarterly newsletter.
9. Compact Disk - SGS has published a Compact Disk containing the 3 SGS Publications mentioned in item 5 above, Indices of the Seeley Ancestor File described in item 4 above, and files of available research reports.
10. Sponsored Trips - SGS organized a trip to England in September 2004 to visit sites of our ancestors and to "Robert and Obadiah's New England" in 2007. Future trips will be planned based on member interest.

SGS was founded in 1965 by Garner Osborn, a Methodist minister who was born Nov. 8, 1887. Osborn was the son of William and Alice (Seelye) Osborn and had spent 15 years gathering Seeley family records. He started the Seeley Newsletter in 1965, seeing the need for an organization like SGS to share research and serve as a repository for the gathered information. Osborn passed away in 1976 at age 88 but his work and SGS live on.

To become a member of the Seeley Genealogical Society, fill out and send in the membership application form on page 15 of this newsletter.



www.seeley-society.net, the SGS website, has celebrated another year of operation. After seven years, information is now added weekly.

Looking at statistics for the month of March 2011, there were a total of 3,026 visits to the website, a daily low of 63 and a daily high of 230 visitors. Wednesday received the most visits, followed in popularity by the weekends. Most of the visitors visited between 8 a.m. and 10 p.m., with the peak occurring at 2 p.m. 45% of the visitors come directly to the website; 52% are directed to the website from a search engine, and 2.8% come to the website from an outside link. The top 3 people searched for on the website are Henry Seeley, Paul Stark Seeley; and Sarah Emma Edmonds.

We would love to add information on your Seeley ancestors to the website. Please feel free to submit copies of obituaries, marriage announcements, and information on military veterans.

DON'T FORGET YOUR DUES

Not sure if your dues are due?

Check out the address label on this issue of the Newsletter. The second line gives you the month and year your dues are paid to. For example:

08/12 means Paul & Carolyn's dues are paid up to August 2012

Paul & Carolyn Taylor
Paid To: 08/12
3848 Frazier Lane
Virginia Beach, VA 23456

SGS Connects a Member with Her Roots and Historic Seeley Stables

Story by SGS Member Patricia Palmer with assistance from SGS Past President Jim Seeley

I am a descendant of Albert Lewis Seeley, owner of the Old Town San Diego Seeley Stables, and his wife Emily Walker. He is my great-great grandfather. Their daughter Carrie Seeley married my great-grandfather, George Brooks. Hence my name is Patricia Ann Brooks Palmer. Who was Albert Seeley? Much of the following narrative is taken from a brochure from the Seeley Stables Museum in San Diego, CA.

Albert Lewis Seeley was born in Illinois in 1822. A stagecoach driver since 17, he had worked in Texas and Los Angeles. In 1867, Seeley came to San Diego with his English-born wife Emily and their six children. He soon began the United States Mail Stage line.

In 1868, the U.S. Government ordered mail service over the Tucson to Los Angeles route via San Diego. Seeley was awarded a contract for the San Diego to Los Angeles run. In addition to the two-day tri-weekly mail and passenger service to Los Angeles, Seeley's stage line also provided service between San Diego and Yuma.

In March of that year, to provide a depot for his line, Seeley purchased the former Bandini residence for \$2,000 in gold coin. He added a wooden second story to the adobe structure and renamed it the Cosmopolitan Hotel.

The new hotel served as a local social center as well as a stage stop. The San Diego Union stated that it was "one of the roomiest and most comfortable hotel buildings in Southern California." Also at this time, Seeley constructed a stable barn adjacent to the Hotel. The present day museum is in a reconstruction of that barn. In 1869, he acquired a partner, Charles Wright.

Seeley's business prospered during the following decade. In 1871, he expanded his Los Angeles mail and passenger service to six days a week. Also, he purchased the Black Hawk Livery Stable. Three years later he contracted with Wells Fargo and Co. to run his coaches tri-weekly to local mountain mines and weekly from Julian to San Bernardino. Seeley was also awarded a four-year contract to deliver mail to Julian, leaving from the Cosmopolitan Hotel on Mondays and Fridays. To accommodate his expansions, it is said that he purchased the largest, most splendid stagecoach that San Diego had ever seen and gave everyone in town a free ride.

In January of 1876, Seeley was named Superintendent

of the San Geronio and Prescott Division of the Wells California and Arizona Express Co. Seeley purchased additional horses and set up stations along a stage line that connected the Arizona towns of Prescott, Phoenix, and Tucson.

Seeley's business declined steadily over the next decade as railroad lines spread throughout the state. By 1887, Seeley had ceased running stages except for a local line between San Diego and Ocean Beach. That same year, he sold the Cosmopolitan Hotel and stable for \$15,000 in gold coin. Seeley moved from San Diego in 1895.

As a postscript to this commentary, though much has been reconstructed about Albert Lewis Seeley, simply by becoming a member of the SGSociety, parts of my life have become reconstructed. To say I am indebted to have become a member, is very truly, an understatement. My membership has led me to my first cousin, who was "lost" to me until a member of the Society forwarded a lineage line to me, and I noticed an e-mail address. I wrote to this address, and my cousin, Steven, and I have reconnected.

Also, I have come to understand (that) some of my beloved family was only cities away! I have become the infamous "dog with a bone" and have reconstructed, via the Seeley Society, so much buried family history. In fact, one day, about a month ago, I found where A. L. Seeley and his wife, Emily Walker Seeley, are buried. I found no record of his burial online, so I called the cemetery directly. A wonderful woman said, "Just a moment..."; she returned with the words (that) she had found "the exact markers for Albert and Emily." I was quiet, I thanked her, and I cried. Thank you, Seeley Society, thank you!



New Book Highlights "The Seelyes of Abilene"

The Seelyes of Abilene tells the story of Dr. A.B. Seelye and his patent medicine company. He built a beautiful mansion in 1905 for his wife and two daughters, and furnished it with items purchased at the 1904 St. Louis Fair. The daughters, Marion and Helen, continued to live in the family home until their deaths in 1988 and 1992. The mansion was sold to Terry and Jerry Tietjens in 1982 with all original contents in place.

The Seelye book, published in 2011, was compiled by Cynthia Manz. It tells the special story of the Seelye family in Abilene and their success to a family fortune. The book is hard cover and has many photos of the Seelye Mansion, and is a tribute to the Seelye family by Terry Tietjens.

The *Seelyes of Abilene* may be purchased by contacting the Seelye Mansion, P.O. Box 337, Abilene, KS 67410 or terryt@access-one.com. (price: \$29.95 + \$2.45 tax; extra \$3.00 for shipping)"



Pennsylvania Seeleys Celebrate 100th Anniversary of Family Reunion

Story By Jim Seeley, SGS Past President

The descendants of James Arnold Seeley and his wife Ida Knights will hold a reunion on Sunday, July 31, 2011 at the home of Dave and Denise Seeley Page.

This is the 100th anniversary of this family's first reunion. However, it's actually the 99th reunion, not the 100th as the reunion was cancelled one year as a result of the austerity associated with World War II.

Still the reunion has been a fixture for the Bradford County, Pa. family which still has the notebooks containing faded but legible, hand-written reunion meeting minutes going back to that very first reunion in 1911.

James A. Seeley was the son of James Seeley (1823-1884), SGS#3686. Denise Page is James Seeley's g-g-granddaughter.

Directions: From Troy, go north on Route 14 about 3 miles. Turn RIGHT on Old Kennedy Road then take the first left onto Garnert Road, a dirt road. You will see the Page's barn on the left about a half mile. It is visible as soon as you turn. Going south on Route 14, go 1 mile past Columbia Cross Roads, (past Cross Roads Equipment), and turn LEFT



onto Old Kennedy Road. For those with GPS Dave and Denise's home address is 350 Garnert Road, Columbia Cross Roads, Pa.

Bring lawn chairs and a dish to pass.

Monument Dedicated to Harmon P. Seely – Civil War Veteran

Story by Chris Havnar, SGS Assistant Genealogist

A monument was dedicated in Elmwood Cemetery in Centralia, Illinois over the weekend of April 9th, 2011, honoring the longest living Civil War Veteran of Marion County. Cpl. Harmon Seeley of the 16th Regiment, Iowa Infantry, who passed away in 1941. Seeley lived the last 12 years of his life in Centralia.

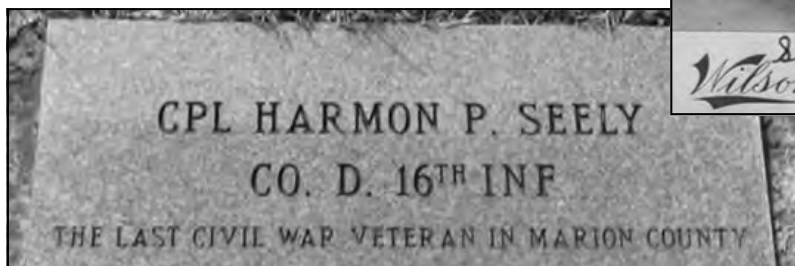
Seely was born in Rome, Wisc. and lacked only a few years of reaching the century mark. He was the son of Elijah Davis and Elmira Swert Seely. When about the age of 16 he moved to Iowa with his parents and enlisted as a private in Co. D. 16th Iowa Volunteers known as Crocker's Iowa Brigade.

He fought in the historic battle of Shiloh and was taken prisoner at Luka, Miss. Sept. 19, 1862. He remained in captivity until exchanged for a southern soldier held in a Union camp. He stood in the front lines at Atlanta and Nashville and fought in the siege of Vicksburg. Eventually he was promoted to fourth corporal on April 12, 1863 and mustered out of the Army Jan. 28, 1865 upon the expiration of his term of service.

He was married to Henrietta Norman on March 4, 1876 from which union four children were born. One girl died at two

years and one son, Busnell Edwin died in May 1911. A son, Hiram Norman died 1962 at Centralia. John Davis, the remaining son, died in 1964 at Hulett, Wyoming.

Harmon is the son of SGS # 3449; his lineage is Harmon P.; Elijah Davis (# 3449); Daniel (# 1554); David; Charles; Samuel; Jonas; Obadiah.



Above: Harmon Seely with his wife Henrietta and sons Busnell, Hiram and John.

Left: A memorial to Seely's service in the Civil War was dedicated in Centralia, Ill.

Book Tells of One Seeley's Remarkable Journey Home

Story Compiled from Information at www.tracyseeley.com

Sure, there's no place like home—but what if you can't really pinpoint where home is?

By the time she was nine, Tracy Seeley had lived in seven towns and thirteen different houses. Her father's dreams of movie stardom, stoked by a series of affairs, kept the family on edge, and on the move, until he up and left.

Thirty years later, settled in what seems like a charmed life in San Francisco, a diagnosis of cancer and the betrayal of a lover shake Seeley to her roots—roots she is suddenly determined to search out.

My Ruby Slippers tells the story of that search, the tale of a woman with an impassioned if vague sense of mission: to find the meaning of home.

Seeley finds herself in a Kansas that defies memory, a place far more complex and elusive than the sum of its cultural myths. On back roads and in her many back years, Seeley also finds unexpected forgiveness for her errant father, and, in the face of mortality, a sense of what it means to be rooted in place, to dwell deeply in the only life we have."

"In this smart meditation on place," said a Kirkus review, "Seeley gives to Kansas the time that she never afforded it in her youth....The author elegantly captures the ambivalence of her return....She learned the history of the places she lived and delved into the native lore—the sacred bundles, medicine wheels and star maps of the Chahiksichahiks—experiencing a deepening and clarity of place. 'When a place lives in you beyond the limits of the senses, when its many maps are laid on your heart, maybe that's when you really belong to it.' Seeley evocatively captures that place here."

NBC Greenlights *Who Do You Think You Are?* for Third Season

Story By *NBC Entertainment*

NBC Entertainment Chairman Bob Greenblatt announced Feb. 22, 2011 that the network had renewed its popular genealogy-based program *Who Do You Think You Are?* for a third season.

Season two of *Who Do You Think You Are?* got off to a solid start, averaging seven million viewers overall over its first two weeks, making it NBC's number one Friday series so far this season in total viewers. Over those opening two weeks.

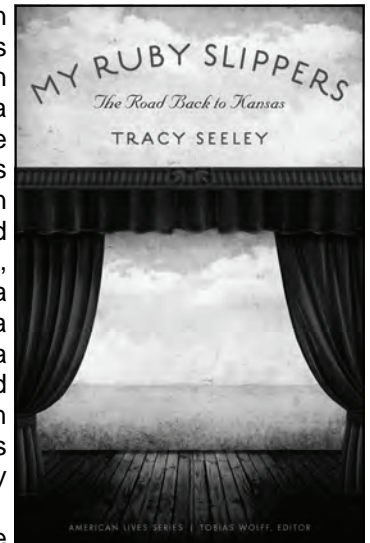
The show follows some of today's most-beloved and iconic celebrities as they embark on personal journeys of self-discovery to trace their family trees. During each episode, viewers are taken on a personal and often mysterious journey with these celebrities as they explore their ancestral pasts, and uncover stories of heroism and tragedy, love and betrayal, secrets and intrigue that lie at the heart of their family histories. At the same time, *Who Do You Think You Are?* celebrates the twists and turns of a great nation and the people who made their way here in search of freedom and opportunity.

In its second season the show followed Ashley Judd,

After high school in Wichita, college in Dallas and graduate school in Austin, where she finished a Ph.D. in British Lit, she taught at Yale for five years before hoofin' it west to San Francisco in 1993. And there, for the most part, she's stayed. Except for a semester in Caracas, a semester in Barcelona, a semester in Budapest, and three years living half-time in L.A. Oh, and after 17 years of living in The City, recently moving to Oakland.

She's been at the University of San Francisco since 1993, teaching literature and creative nonfiction. There, she has won the Distinguished Teaching Award and the College Service Award, and spent a year as the NEH Chair in Humanities, during which time she began writing *My Ruby Slippers*. In addition to teaching, she is the co-director of the Center for Teaching Excellence and runs a program for supporting faculty writing.

For the moment, Tracy lives in Oakland with her husband Frederick Marx, a filmmaker. There, she grows vegetables, writes, grades papers, and hangs out on her stoop, talking to neighbors. She is plotting to acquire some backyard chickens. She figures if she gets chickens, she'll never have to move again.

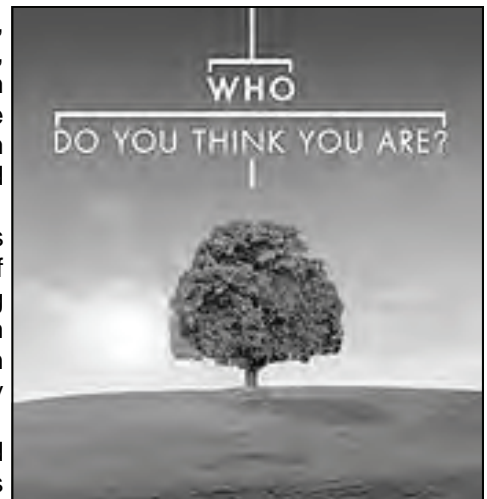


Gwyneth Paltrow, Steve Buscemi, Lionel Richie, Kim Cattrall, Rosie O'Donnell, Tim McGraw, and Vanessa Williams.

The show is an adaptation of an award-winning hit British television documentary series.

If you missed any of the shows from the second season, they can be viewed

online at <http://www.nbc.com/who-do-you-think-you-are/video/categories/season-2/1284625/>



ancestry.com



Military Notes

Air Force Airman Evan A. Seeley



Feb. 11, 2011 (USAFNS) -- Air Force Airman Evan A. Seeley graduated from basic military training at Lackland Air Force Base, San Antonio, Texas.

The airman completed an intensive, eight-week program that included training in military discipline and studies, Air Force core values, physical fitness, and basic warfare principles and skills.

Airmen who complete basic training earn four credits toward an associate in applied science degree through the Community College of the Air Force.

Seeley earned distinction as an honor graduate.

He is the son of Dana and Barbara Seeley of All Sky Drive, Colorado Springs, Colo.

The airman graduated in 2009 from Falcon High School, Colo.

Army Pvt. Richard G. Seely



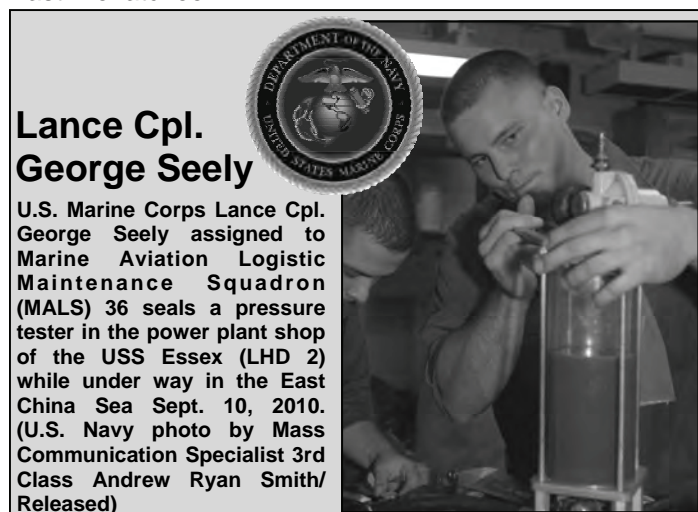
Feb 24, 2011 (USAFNS) -- Army Pvt. Richard G. Seely has graduated from the Multiple Launch Rocket System (MLRS) Crewmember Advanced Individual Training course at Fort Sill, Lawton, Okla.

The course is designed to train the crew member in launch operations of various missiles and ammunition in quick strikes during combat. The student was trained to perform maintenance in various launchers and re-supply vehicles and reload ammunition on these type vehicles.

Students were trained to drive, operate, perform maintenance and ammunition re-loading of the M270 self-propelled loader launcher and the ammunition re-supply vehicle and trailer. They also learned to mount radio sets in vehicles, cables communication components in vehicle launcher, and operate and perform operator maintenance on communications equipment.

He is the son of Guy R. Seely of Fancher Field Road, East Wenatchee, Wash.

Seely graduated in 2010 from Eastmont High School, East Wenatchee.



Lance Cpl. George Seely

U.S. Marine Corps Lance Cpl. George Seely assigned to Marine Aviation Logistic Maintenance Squadron (MALS) 36 seals a pressure tester in the power plant shop of the USS Essex (LHD 2) while under way in the East China Sea Sept. 10, 2010. (U.S. Navy photo by Mass Communication Specialist 3rd Class Andrew Ryan Smith/Released)



Col. Gregory Seely

Maj. Gen. Timothy Byers speaks with Col. Rick LoCastro, Russ Hume and Col. Gregory Seely during a visit to the U.S. Air Force Academy's solar array March 4, 2011, at Colorado Springs, Colo. The array is scheduled to generate its first megawatt of power in March and ramp up to its full 6MW capacity by the end of April. General Byers is the Air Force Civil Engineer and graduate of the University of Kentucky. Colonel LoCastro is the Academy's 10th Air Base Wing commander. Colonel Seely is the director of Installation and Mission Support, and Mr. Hume is an engineer with the A7 directorate. (U.S. Air Force photo/Bill Evans)



Lt. Col. Randall Seely

James Shilling, Raymond Berhalter and Lt. Col. Randall Seely look at a Large Aircraft Infrared Countermeasures pod attached to a KC-135 Stratotanker on the flightline March 1, 2011, at Scott Air Force Base, Ill. The pod is a laser-based countermeasures system designed to detect and employ countermeasures against infrared-guided surface-to-air missiles. Mr. Shilling is the LAIRCM system manager for Northrop-Grumman in Chicago, Mr. Berhalter is the program manager at the KC-135 System Program Office at Tinker AFB, Okla., and Colonel Seely is the tanker test manager and chief of the Air Mobility Command Aircraft Test Management Branch. (U.S. Air Force Photo/Master Sgt. Scott T. Sturkol)

SGS Queries

Coordinated and Compiled by SGS Query Editor Linda Crocker (Data Current as of April 15, 2011)

What's New in Queries

All sorts of things land in my Inbox (continued)

Paul Seeley, Query Area Coordinator for Michigan, has done a lot of work visiting cemeteries and checking death records. He recently visited Mt Perry Cemetery and noted the four Seeley men there all died of heart attacks. He suggests that all you Seeley men visit your doctor or cardiologist regularly.

Colleen Charvella found us online and wrote, "My Uncle served in the Vietnam War: Name: Lawrence R Seeley, born 6 Nov 1948. Rifleman with A Co., 1st Battalion, 35th Infantry, 3rd Brigade, 4th Infantry Division. Would you add him to the website?"

(Interesting that I, your Query Editor, was born exactly one year later).

You can read about Larry's service at <http://www.seeley-society.net/vets/vetvn-LawrenceRSeeley.html>

Introduction to Queries

Query number is 2 digit year, 2 digit month of newsletter, query sequence number.

Please send your queries to SGS Query Editor Linda Crocker at llbc100@msn.com or mail to Linda at home (see inside back cover). Queries are assigned a query number by the Query Editor, researched and then sent to the Query Team and Area Coordinators for their input. Linda summarizes each query and any responses for inclusion in the newsletter.

If you have any information on the queries below contact the submitter but also remember to send a copy of the information to Linda so the query can be updated in the next newsletter.

Query Updates

Update to Query 0102-1 Re: Samuel Seeley b. 1810 PA and his wife Catherine Benner

Another descendant of this family has contacted us.

Michelle Sterye DiFiori (difioris@sbcglobal.net) writes: "My gt-gt grandparents are John Seeley and Jane Benson Seeley. My gt grandmother is Mary Seeley and she married William Sterye.

The family is from Johnstown, Cambria Co. Pa. Do you think I am part of this Seeley family? Who can I talk to about this family?"

SGS Response:

I found the following information to document Michelle's line:

1900 census Youngstown, Mahoning, OH

Stery, William b. Aug 1859 PA, parents b. PA, teamster, md 19 yr to

Stery, Mary M b. Oct 1861 PA, parents b. PA, 7 children, 5 living

Stery, Charles E b. Apr 1884 PA, parents b. PA, teamster

Stery, Velbin (son) b. Oct 1886, Nellie M b. June 1887, Florence F b. July 1893, Myron C b. Mar 1899, all b.

OH, parents b. PA

1880 census of Allegheny, Allegheny, PA

Mollie Seeley age 20 and William Starry age 22 are both working as servants for James and Rebecca McCutcheon.

I imagine that Mollie is probably Mary M Seeley, soon to be married to William. Note that Allegheny Co. PA is between Cambria Co. PA and the OH border.

1880 census Millville, Cambria, PA

Ceely, John, age 45, laborer, b. PA, PA, PA

Ceely, Jane, age 40 b. PA, PA, PA

Ceely, John age 12, Annie age 2, both b. PA, PA, PA

1870 census Millville, Cambria, PA

Sealy, John, age 33, laborer, b. PA

Sealy, Jane, age 28 b. PA

Sealy, Mary age 12, John age 3, Samuel(?) age 10, all b. PA

1860 census Wheatfield, Indiana, Pennsylvania

Seely, John, age 24, coal miner b. PA

Seely, Jane, age 22 b. PA

Seely, Mary, age 2 b. PA

Benson, Enoch, age 21 b. PA

1850 census: Wheatfield, Indiana, Pennsylvania

Samuel Seely age 40 Laborer born PA

Catharine Seely age 36 born PA

John Seely age 15 born PA

Maria Seely age 12 born PA

Nancy Seely age 9 born PA

Susan Seely age 6 born PA

Pamelia Seely age 4 born PA

Michael Seely age 0 born PA

Frederick Sellers age 22 Laborer born PA

1850 census Conemaugh, Somerset, PA

Benson, Samuel S age 40, stone mason, b. MA

Benson, Anne, age 40 b. PA

Benson, Levi age 16, Angeline age 14, Jane age 12,

Enoch age 10, Cynthia E age 8, Theodore age 5, Wm

K or H age 3, all b. PA

Michelle would love to contact other descendants of this Samuel Seely and to find proof (a marriage certificate?) that the Mary/Mollie who married William Sterye is really from this family.

Update to Query 0108-9 Re: Seelye family of Joshua's Rock, Warren County, NY

Elwin Seelye, a descendant of Reuben Seelye, SGS# 2502, married Elizabeth Eggleston, daughter of Dr. Edward (Eggleston).

The home was built by the Eggleston Family. They had three children Elwyn, Allegra, and Maude. G.L. (LaBossG@aol.com) is looking for family members of Allegra Eggleston Seelye (1878-1901). G.L. has drawings/sketches from Allegra to give to any family members.

Update to Query 0708-9 re: Justus Seeley b. 1766 CT We have another person who descends from the family of Justus Seeley through his son John and John's wife Mary

Please See SGS Queries Page 12

SGS Queries (continued from page 11)

Lamb. Christopher Charles Seeley (c/o Rosaleen Cutler rosaleen.cutler@sympatico.ca) of Coburg, Ontario, Canada is a LIFE member of SGS. Chris recently had a DNA test done and he matched the Nathaniel line in 43 of 43 markers. The earliest knowledge he has of his family is a Justus and Anne (Thompson) Seeley of Sand Point, near Arnprior, Ontario, Canada. This Justus is his great, great grandfather. Anne (Thompson) Seeley died 1887 at age 47. Chris has been to her graveside and has a picture of her restored grave. Justus Seeley is one of eight children of John Seeley (son of Justus and Sarah or Anne) who married Mary Lamb and later married Marion _____ – the other children are John, Joseph, George, Hattie, Ellen, Helen and Annie. Justus lived at Matawatchan Township, near Griffith, Ontario. Justus and Anne had Wm. John Seeley who died at age 4, Colin Seeley 1871-1955 (My great grandfather) Archibald Seeley 1874-1953, Joseph Seeley 1877-1948, Mathilda Seeley 1881-1957. Chris wonders if Justus, father of John is the Justus who married Sarah Stewart. However, that is Justus William Seelye, SGS# 282, and we know he didn't have a son John. However, Justus William's brother Joseph, SGS# 281 had a son Justus b. 4 Feb 1766 who was the subject of this previous query with son John and siblings as indicated by Chris. Chris has Justus and Anne Thompson Seeley's children as Wm. John Seeley who died at age 4, Colin Seeley 1871-1955 (My great grandfather) Archibald Seeley 1874-1953, Joseph Seeley 1877 - 1948, Mathilda Seeley 1881-1957.

SGS Response:

I found:

1851 census McNab, Renfrew, ONT

Scellie, John, age 61, farmer, b. CAN, Ch. of Eng.

Scellie, Mrs J., age 48 b. IRE

Scellie, George age 19, Ann age 17, Justus age 12,

Merria age 10, Charlotte age 8, all b. CAN

1861 census McNab, Renfrew, ONT

Mrs Seeley age 57 b. IRE with Geo age 28, Char't age 17 and Justice age 22, all b. CAN

In 1871 Justice Seely is in Arnprior, Renfrew South age 31 with wife Annie age 29 and ch. Mary age 7, William John age 2 and Collin age 5 mos. (b. Nov 1870)

In 1881 in Griffith and Matawatchan, Renfrew So. it is Justus and Ann with Mary 17, Coulin age 10, Archie age 7 and Joseph age 3.

We still would like to prove the line from Joseph Seeley, SGS# 281 to his son Justus, SGS# 828 to John Seely and his siblings.

New Queries

Query 1105-1 Submitted by Margaret Jenstad (jenstad@pro-ns.net)

Margaret is researching the Barnes family, who came from Fairfield CT, to Rutland Co VT, to Malone, Franklin Co. NY about 1804, and then west to Minnesota and Iowa. She is specifically searching for George W. Barnes (b. 1835 Malone NY, son of Charles H. Barnes and Sally Hoyt) and Elizabeth E. Seeley (b. 1837, dau. of Nathan Wheeler Seeley and Betsey Erwin). They settled in Boone, Boone

Co Iowa and are enumerated in several censuses there. They are buried in Boone IA in Linwood Cemetery. She would like to know where they were married in 1858, George's middle name, and any descendants they had. Margaret is aware of one son, Charles W. Barnes.

SGS Response: From Franklin County Marriages, Franklin Co. NY Copyright (c) 2001 by John Austin (uncajohns@yahoo.com)

These are the marriages performed by Rev. Ashbel Parmelee, minister of the Congregationalist Church in Malone, NY. He was pastor of the church from 1810 until 1845, but occasionally performed marriages right up until the time of his death in 1862 His wife Betsey and children Ashbel B., Mary, Sarah and Emily often are listed as witnesses in early records, as is a servant girl Susan Gilligan in later marriages.

Seeley, Mary md Dec. 16, 1852 to Charles Durkee. He was a merchant from Malone age 25; she was age 22, from Malone. Witnesses: Wheeler Seeley, Betsey Seeley, Alfred Seeley, Betsey Parmelee

Burials in Moira Community Cemetery, Franklin Co. NY

MARIAH Wife of Benj. SEELEY died Sept. 28, 1841 AE 42

Separate stone in the same lot:

ALFRED E. son of Nathan W. & Betsey Seeley Died April 25, 18?3 (1823?) Aged 5 yrs.

Separate stone in the same lot:

In Memory of BETSEY SEELEY who died Jan. 22, 1883 (1837?) AE 22 y'rs.

Separate stone in the same lot:

BENJAMIN SEELEY died April 23, 18__ Age 63 Years (NOTE: The year may be 1833. This stone is very eroded!)

Morningside Cemetery, Section E, Malone, Franklin County, New York

SEELEY: Wm. B. SEELEY Died Aug. 18, 1894 AE 76 Yrs.

Sarah A. Wife of W. B. SEELEY Died July 26, 1893 AE 66 y'rs.

Footstones: W.B.S., Sarah

Separate stone in the same lot:

Laura SEELEY Died Oct. 27, 1852 Aged 27 Years

Separate stone in the same lot:

Pascal S. Son of Nathan W. & Betsey SEELEY Died July 30, 1842 AE 2 Y'rs. & 9 Mos

From 'Disconnected Whipples'

Sarah Ann Whipple (b. abt 1816, of Malone, Franklin Co., NY) married William B. Seeley (b. abt 1820, also of Malone) on 6 Jan 1847 in Malone.

From DeWitt County Illinois GenWeb - Obituaries

Samuel Magill was born in Middlebury, Vermont, on the 14th of July, 1826. His parents were of Irish birth. The family consisted of four brothers and two sisters, Mrs. CARPENTER and Mrs. DENTON, of Manchester, Iowa, are the only two surviving members of the family. The Magill family were remarkable for their love and affection to each other. In life the four brothers were united in everything from the time they were boys together at the old homestead in Vermont. The death of Henry, William and

Samuel, following in almost rapid succession, less than nine months intervening from first to last, illustrates that "United in life, in death they are not divided." Samuel Magill was married in Malone, New York, to Miss Eleanor SEELEY in 1855, and one child, Alfred H. MAGILL, was the result of their union. Allie was born in Clinton and here he has grown to manhood. Mr. Magill was active in advancing the interests of the city, and at times during his long residence here served as a member of the council. He was a member of the Masonic order, and served his lodge in the capacity of treasurer more than twenty consecutive years. Till a few weeks ago, he was manager of one of the largest mercantile houses in the city, and devoted his life to business. When he had arrived at that time when he could sit down and enjoy the fruits of a life of industry and application to business, the mental strain of the past was too much for him to withstand. Samuel Magill was yet in the prime of life, his age being but a little more than fifty-seven years. Note: Four years after this tragedy Samuel's son, Alfred, also committed suicide.

Looking at census records:

In 1900 Geo W and Bessie Barnes are in Des Moines, Boone, IA. Bessie says she has had no children and none living. They have been married 41 years. Geo W says he was b. Dec 1835 in NY to parents b. in NY and his occupation is a min. water merchant. Bessie says she was b. Jun 1837 NY, father b. CT, mother b. NY. No one else is listed with them.

1850 census Malone, Franklin, NY

Barnes, Charles, age 49, farmer, b. VT
 Barnes, Sally, age 46 b. VT
 Barnes, George W age 14, James age 6, Elizabeth age 1 mo., all b. NY

1860 census Malone, Franklin, NY

Barns, George, age 24, sawyer b. NY
 Barns, Betsy, age 23 b. NY

1870 census Chillicothe, Peoria, IL

Barnes, Geo W age 33 b. NY, ice dealer
 Barnes, Betsey, age 31 b. NY
 Barnes, Charles, age 7 b. IA

Listed in a hotel just 4 households earlier are Josie Barnes age 25 b. NY and Jessie Barnes, female age 6 b. NY. This leads me to wonder if Charles is really a son of George and Betsey/Bessie or was adopted – maybe a nephew.

In Chillicothe in 1880 listed as Georg W Barnes age 44, grocer b. NY, Betsey S age 43 b. NY and son Charles age 17 b. IA, parents b. NY

In 1885 George W Barnes age 48, Bessie age 47 and Chas W age 22 are in Des Moines, Boone IA where George is a furniture dealer and Charles is a bank clerk. George and Bessie are b. NY and Charles is b. Hardin Co. IA

Civil War Record

George W Barnes, age 28 b. abt 1836 at Davenport, (Franklin), NY. Enlisted 1864 at Pittsfield (Otsego), NY. Mustered in 1864, mustered out 7 Jun 1865

Cemetery Records – W. Linwood cemetery, Des Moines, Boone, IA

Geo. W. Barnes, died 1908, born 1835

Elizabeth S Barnes b. 1837, died 1915

James Ormsby Barnes b. 3 sep 1843 d. 13 Nov 1900, b. Franklin Co. NY, moved to Boone Co. in 1868. Obit in Boone Co. Democrat 16 Nov. 1900. Husband of Mary (Stevens)

James O Barnes is listed in the 1870 and 1880 census with wife Josephine. In 1900 he has been married 8 years to Mary.

1850 census Malone, Franklin, NY

Seeley, Nathan W age 54 or 59 b. CT, farmer

Seeley, Betsey, age 52 b. VT

Seeley, Laura age 25, Eleanor age 23, Mary age 21, Alfred age 16, Clara age 15, Betsey age 12, all b. NY

In 1860 Nathan W and Betsey Seely ages 71 and 64 b. CT and VT are still in Malone with Albert age 26 and Clara M age 24 both b. NY

We do not have the ancestry of Nathan Wheeler Seeley. There is a Benjamin Seeley who was an early settler of Malone - probably his son but I need to find some proof. See Query 0711-6 for more information on Franklin County NY Seeleys. If you can place Nathan Wheeler Seeley in a family please contact your Query Editor.

Query 1105-2 Submitted by Mike Snodgrass (mikecarols@msn.com)

Mike is the 7 times great grandson of Samuel Seeley, who was born in 1740 in Fairfield, CT and killed by the British on 27 Apr 1777 at the Battle of Ridgefield. While doing DAR research for his mother, he came across a document saying the body of Samuel Seeley was transported to Easton and buried at the Baptist Church cemetery. Samuel is also listed on a plaque in Ridgefield. Some say he was buried in a mass grave in Ridgefield.

Would someone be able to tell Mike if Samuel is buried in the Union Cemetery? He plans to visit the church and cemetery in Easton and Ridgefield, CT in June of 2011.

SGS Response: This Samuel is SGS# 208. We don't have any information on his burial place. I did suggest that Mike postpone his trip until July so he could combine it with a trip to the SGS reunion. If you know anything about this Samuel Seeley's place of burial, let me know.

Query 1105-3 Submitted by Patricia Seeley Stahl (tastahl03@hotmail.com)

Patricia's father was William Andrew Seeley b. Feb 6, 1917 in Baltimore, MD, died 1993 in Baltimore, married to a Mary Nicholls. He had a sister Helen.

Her grandfather is William Andrew Seelye b. 1884 born in Baltimore, Md married to a Bertha Fleetwood. His siblings were Nelson Paul Seelye b. 1881 and Kattie B Seelye b. 1883.

Her great grandfather was William S Seelye b. 1853 in Pennsylvania married a Harriett Peregoy. Her gr gr grandfather was Andrew J Seelye b.1826 in Pennsylvania married to a Kate M. They had six children: George b.1851, Annabella 1856, Philip b. 1861 Lizzie B b.1864, Blanch K 1874 as well as William. Patricia would like to know the ancestry of Andrew Jackson Seeley/Seelye.

SGS Response: None of these Seeleys are in our database.

1920 census Baltimore, Baltimore, MD

Please See SGS Queries Page 14

SGS Queries *(continued from page 13)*

Seeley, William A, age 34 b. MD, PA, MD, electric RR conductor

Seeley, Bertha, age 24 b. MD, PA, MD

Seeley, William A Jr age 2 yr 10 mos., Helen age 1 yr 10 mos., both b. MD, MD, MD

In 1930 in Baltimore Bertha is listed with William age 13 and Hellen age 12, md, working as a servant for a private family

Also in Baltimore in 1930

Seeley, William age 77 b. PA, PA, PA, produce dealer, md 50 yr to

Seeley, Harriet H age 68 b. DC, MD, MD

Seeley, William age 44 b. MD, PA, PA, 1st md at age 21, cutter at clothing factory

Social Security Death Index:

William A. Seeley b. 6 Feb 1917 d. 17 Nov 1993 - Baltimore, Baltimore, Maryland, U.S.

WWII Army Enlistment

William A Seeley b. 1917 MD, resides MD, enlisted 23 mar 1943 at Baltimore as private

WWII Draft Reg'n

William Andrew Seeley of 1116 W Lombard St Baltimore, MD, b. 7 Jun 1885 at Baltimore, names Mrs Lucy Seeley of same address as next of kin

WWI Draft

William Andrew Seeley of Baltimore, born 7 Jun 1885, United RR conductor, names Bertha Seeley of same address as next of kin

1910 census Baltimore, Baltimore, MD

Seeley, William A age 24 b. MD, PA, DC, shirt co. cutter, md 3 yr to

Seeley, Clara L M, age 22 b. MD, MD, MD, 0 ch., 0 living

1900 census Baltimore, Baltimore, MD

Peregoy, Nelson R b. Dec 1824 MD, MD, MD, widower

Peregoy, Edward A b. Oct 1854 MD, MD, MD, son, produce dealer, single

Seelye, William, son-in-law b. Sept 1852 WV, WV, MD, produce dealer, md 20 yr to

Seelye, Hattie, dau. b. Mar 1862 MD, WV, MD, 4 children, 1 living

Seelye, Nelson P b. Apr 1881, Hattie B b. Oct 1882, William A b. Jun 1885, all b. MD, WV, MD

(In 1910 William S and Hattie A Seeley Have Nelson and Edward Peregoy living with them. Hattie has had 4 ch., 3 living)

(In 1920 William and Hattie continue to live in Baltimore. her brother Edward Peregoy is still with them)

1880 census Baltimore, Baltimore, MD

Seeley, Andrew J age 54, b. PA, NY, PA, police officer

Seeley, Kate, age 51 b. PA, ENG, PA

Seeley, Geo A age 29, blacksmith, Wm S age 27, huckster, Annabella, dau. age 24, divorced, all b. PA, PA, PA

Seeley, Philip M. age 19, Lizzie B age 16, Blanch K age 6, all b. MD, PA, PA

(Harriet Peregoy and her family are listed on the next census page)

In 1870 Andrew J Seeley with Kate, George, Anna B., Philip and Elizabeth are in Baltimore.

I can't find any of the family members in the 1860 census.

1850 census Philadelphia, Philadelphia, PA

Seeley, Andrew Jackson, age 24 b. PA, md within year to Seeley, Catherine, age 20 b. PA

Household also contains George W Mercer age 30, dealer, Anna Mercer age 27, John H Carrigan age 18, and Catherine S Carrigan age 13, all b. PA

If you can identify parents for Andrew Jackson Seelye/ Seeley please send your information to me.

Query 1105-4 Submitted by Jeff Lloyd (majorwilliamstree@msn.com)

Jeff would like to hear from any descendants of Harvey H. Seeley (1830-1905) & Asa P. Seeley (1834-1906), brothers, both of Waterford, Oakland County, MI. They are sons of Harvey Seeley, SGS# 1967. It would probably be advantageous for Jeff to hear from any of their sibling's descendants as well.

Jeff has posted some of their immediate families and descendants in this descendant tree view at Rootsweb: http://wc.rootsweb.ancestry.com/cgi-bin/igm.cgi?op=DESC&db=seeleytree_2011&id=121

Jeff wants to locate possible photographs (or maybe even other artifacts) of the farm & buildings on their farm in Waterford (both had lived at this acreage), which is the location of the original Maj. Oliver Williams farm settlement on Silver Lake.

How to Submit a Query

If you would like to submit a query please follow a few guidelines.

Be specific and detailed: Give us all the information you have about the person or family in question, especially dates and locations.

What resources have you already consulted? The SGS publications or website? The census? Cemetery records? County histories? Family Bible? Others? (specify)

What exactly do you want to know? Parents' names and details? Sibling information? Information on a family marrying into the Seeley family? Our sources?

After your query is printed please keep us informed about any information you receive or further progress you make on your own. Other members may be interested or related to your line.

We will publish an update to your query with any new information we receive. This may lead to even more information. One more name, date or place may be the key to linking your line to another.

Your query will also be posted on our website. Make sure we have your current contact details – sometimes we get new information months or even years after your query appears.

How to Answer a Query

If you have information to share on queries from current or past issues, send it to the query submitter and also to Linda Crocker, Query Editor. Please include the Query number, preferably in the subject line of your email. Remember to cite your sources.

SGS Elected Officers & Board of Directors for 2009 - 2011

SGS Constitution, Art IV, Sect. 1: The elected officers of the Society shall be a President, First Vice-president, Second Vice-president, Secretary, Treasurer, Chief Genealogist, and three Directors elected from the general membership.

President

Katherine M. Olsen
777 E. Temple, Apt. 13H
Salt Lake City, UT 84102
(801) 355-0301
katherinemolsen@gmail.com

1st Vice President & Publications Editor

Paul Taylor
3848 Frazier Lane
Virginia Beach, VA 23456
(757) 759-9551
paul.taylor.va@gmail.com

2nd Vice President

George Seeley
1442 Thousand Acres Rd.
Delanson, NY, 12053-2223
(518) 895-8009
sseeley3@nycap.rr.com

Secretary

Mary Palley
1616 Sunset Drive
Logan, UT 84321-4308
(435) 752-5546
mary@palley.com

Treasurer

Sally Seeley
1442 Thousand Acres Rd.
Delanson, NY, 12053-2223
(518) 895-8009
sseeley3@nycap.rr.com

Chief Genealogist

Linda L Crocker
61 Ronald Reagan Drive, Westwood,
Parkersburg, WV 26101
(304) 210-5591
llbc100@msn.com

Director

Terry Tietjens
P.O. Box 337, 1105 N. Buckeye
Abilene, KS 67410
(785) 263-1084
terryt@access-one.com

Director

Wesley Waring
16179 89th Ave. N.
Maple Grove, MN 55311
(763) 494-3277
wesleyawaring@cs.com

Director & Historian

Ruthetta Seelye Hansen
1129 S County Line
McCracken, KS 67556
(785) 394-2316,
rhansen@gbta.net

SGS Appointed Officers & Volunteers for 2009 - 2011

SGS Constitution, Art IV, Sect. 1: "The President shall appoint an Ancestor Files Chair, a Membership Chair, a Publications Editor, Assistant Genealogists as required, and a Director for the National Research Center." **SGS By-Laws, Art. III, Section 9:** "The immediate past President shall be an ex-officio member of the board of directors and committees in a non-voting advisory capacity." **SGS By-Laws, Art. III, SECTION 10:** "The President, with the approval of the Executive Board, may establish other positions and collateral duties not named elsewhere."

Director (Past President)

James R. Seeley
108 Westridge Dr.
Churchville, VA 24421
(540) 337-8633
jrseeley@comcast.net

Membership Chair

Lynda Simmons
125 Parkview Drive
Park City, Utah 84098
(435) 649-9878 cell (801) 910-0300
summitkids@yahoo.com

Assistant Membership Chair

Margaret Petersen
2736 S Highland Drive #4
Salt Lake City, Utah 84106
kpetersen7835@msn.com

Assistant Genealogist – Robert/Nathaniel

Chris Havnar
625 Canyon Drive
Pacifica, CA 94044
(650) 359-5617
Chris.havnar@gmail.com

Assistant Genealogist – Obadiah

Dian Little
18210 15th NE #102, PO Box 55607
Shoreline, WA 98155
(206) 890-9116
dianlittle@hotmail.com

Webmaster & Ancestor Files Co-Chair

Chris Havnar
625 Canyon Dr.
Pacifica, CA 94044
(650) 359-5617
chris.havnar@gmail.com

Query Editor & Ancestor Files Co-Chair

Linda L Crocker
61 Ronald Reagan Drive, Westwood,
Parkersburg, WV 26101
(304) 210-5591
llbc100@msn.com

Seelye Research Center

Terry Tietjens
P.O. Box 337, 1105 N. Buckeye
Abilene, KS 67410
(785) 263-1084
terryt@access-one.com

Interim DNA Lineage Project Manager

James R. Seeley
108 Westridge Dr.
Churchville, VA 24421
(540) 337-8633
jrseeley@comcast.net

SGS CD-ROM Project Director

Bob Seeley
861 SW 48th St
Lincoln City, OR 97367
(541) 557-4192
rps@rpseeley.com

Librarian, Seelye Research Center

Pamela D. Turner
1935 Okeechobee Drive
Colorado Springs, CO 80915-1743
Cello_t@comcast.net

Seeley Genealogical Society Membership Form

NAME (First, Middle Initial, Last)		TELEPHONE NO. (Optional)
ADDRESS (Number, Street)		E-MAIL ADDRESS (Optional)
ADDRESS (City, State, Zip)		
DESCENDANT OF: <input type="checkbox"/> Robert <input type="checkbox"/> Obadiah <input type="checkbox"/> Other (Attached) <input type="checkbox"/> Unknown		
I/we have submitted our Seeley line as far as known to Linda Crocker or Chris Havnar (contact info above) for inclusion in the SGS Ancestor File		<input type="checkbox"/> YES <input type="checkbox"/> PLANNING TO <input type="checkbox"/> NO
MEMBERSHIP OPTIONS: <input type="checkbox"/> ONE YEAR \$8.00 <input type="checkbox"/> TWO YEARS \$15.00 <input type="checkbox"/> THREE YEARS \$21.00 (In U.S. Dollars) <input type="checkbox"/> FIVE YEARS \$30.00 <input type="checkbox"/> LIFETIME \$100.00		
MAIL FORM AND MEMBERSHIP FEE TO: Lynda Simmons 125 Parkview Drive Park City, Utah 84098		DONATION: I/we would like to make a donation to SGS in the amount of \$ _____ (U.S.)



Seeley Genealogical Society

% MEMBERSHIP CHAIR
LYNDA SIMMONS
125 PARKVIEW DRIVE
PARK CITY, UT 84098

ADDRESS SERVICE REQUESTED

PRSRT STD
U.S. Postage
PAID
Harrisonburg, VA
PERMIT NO. XXX

SGS Publications for Order

All checks should be made payable to SGS.

SGS has several publications and research tools for sale.

1. *The Descendants of Robert Seeley (1602-1667) and Obadiah Seeley (1614-1657), Generations One Through Five, 1997 Edition* (U.S. \$17)
2. *The Sixth Generation Families, 1995 Edition* (U.S. \$17)
3. *The Seventh Generation Families: Descendants of Robert Seeley (1601-1667) and Obadiah Seeley (1614-1657), 2000 Edition* (U.S. \$25)
4. The SGS CD-ROM -- Revised August 2009 (U.S. \$15) that includes:
 - Folder A: the Three SGS Publications by Madeline Mills and Katherine Olsen
 - Folder B: SGS Ancestor File Index Revised August 2009 by Chris Havnar & Linda Crocker (original by John Seely)
 - Folder C: 1980's Research Rpt. on Obadiah Seeley (New Eng. records), Fred C. Hart, Jr., CG
 - Folder D: Research Report on Robert Seeley by Alan Phipps, MA, AG
 - Folder E: 2006 Research Rpt on Obadiah Seeley (old English records), Clifford L. Stott, CG
5. The SRC Document Index (with Change Five entered) lists documents shelved at the Seelye Research Center (U.S. \$10).
6. The SGS GEDCOM CD is a file of genealogical information from SGS publications and the International Genealogical Index. (U.S. \$15)
7. Souvenir Book of 2009 Salt Lake City Reunion (U.S. \$20)

Items 1, 2, and 3 should be ordered from Terry Tietjens, item 4 from Bob Seeley, item 5 from Pamela Turner, and items 6 and 7 from Kathie Olsen. You can find contact information (address, phone number, & e-mail address) on page 15.

SGS Area Coordinators

Area Coordinators help the Query Editor respond to queries. They also help the Membership Chair recruit new members in their areas. Here are the volunteer SGS area coordinators:

Arizona	Ann Hall, ramonhall@prodigy.net
*California	Christine Havnar
Colorado	Ann Hall, ramonhall@prodigy.net
Connecticut	Ardienne Damicis, adwdmt@aol.com
Florida	Andrew Waber, wabnoles@yahoo.com
*Kansas	Terry Tietjens
Michigan	Paul Seeley, pnseeley@juno.com
Montana	Ann Hall, ramonhall@prodigy.net
*Nebraska	Terry Tietjens
New Mexico	Ann Hall, ramonhall@prodigy.net
New York	Marshall Seelye, am815@localnet.com
New York	(Warren, Washington, and Saratoga Counties)
New York	Janet Seely, jseely@frontiernet.net (Genesee and Monroe Counties)
New York	Laura Condie, billaura@aol.com (Southern Tier Counties and Finger Lakes Region)
*New York	Mary Palley, (Remainder of N.Y.)
Ohio	Andrew Waber, wabnoles@yahoo.com
*Oklahoma	Terry Tietjens
*Ontario, Canada	Dian Little
*Oregon	Bob Seeley
*Pennsylvania	Jim Seeley
Wyoming	Ann Hall, ramonhall@prodigy.net
*SGS Query Editor	Linda Crocker

Is your state or province missing from the above list? If so, we need you! Contact Kathie Olsen.

*Means address is on page 15